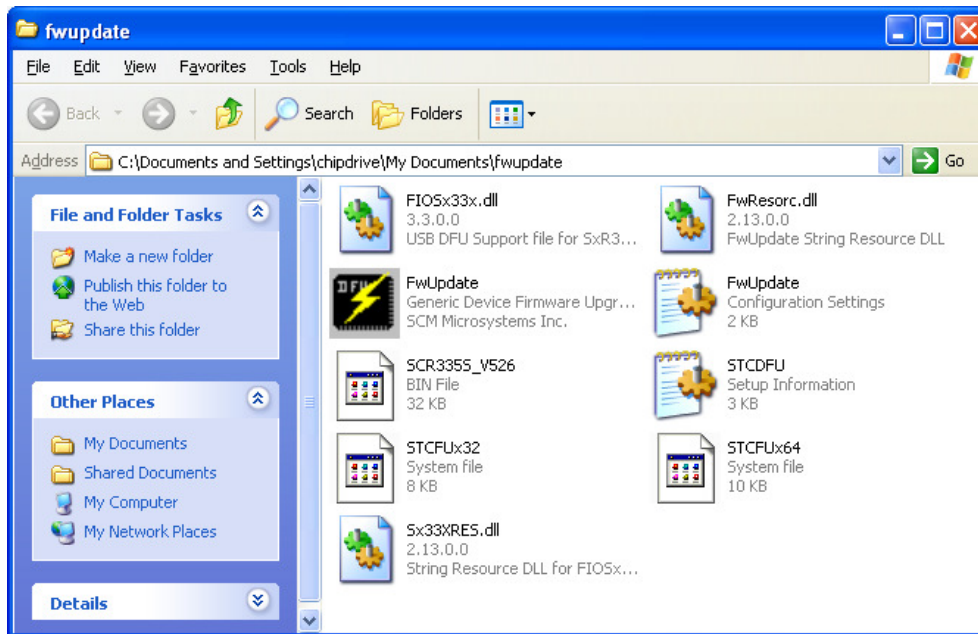
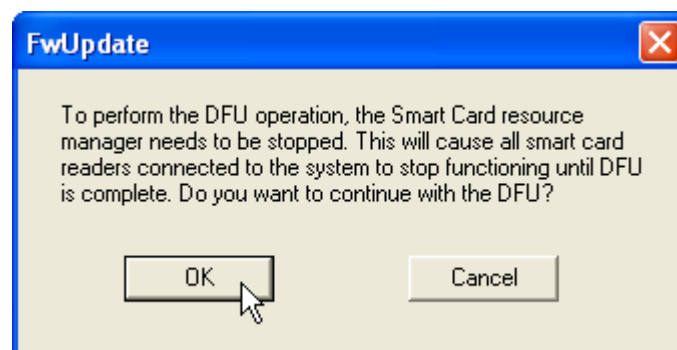


Manual: How to update the firmware of card readers recognized as STCII DFU

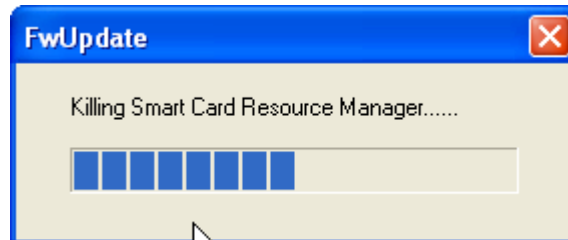
Unzip the downloaded ZIP file into a directory of its own and start FwUpdate.exe from there



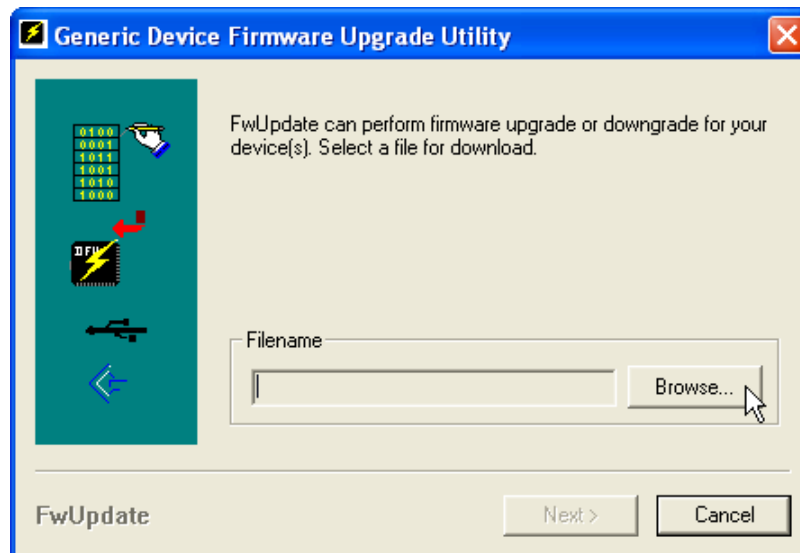
Click „OK“ to Stop the Smart Card Resource Manager



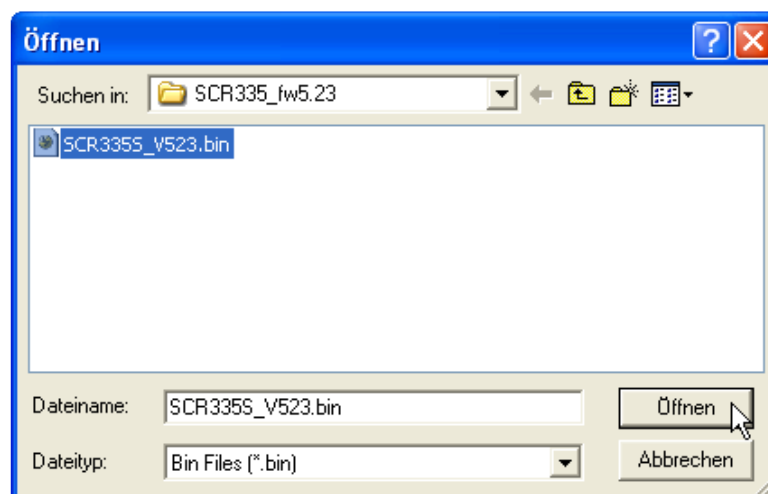
The following message is displayed:



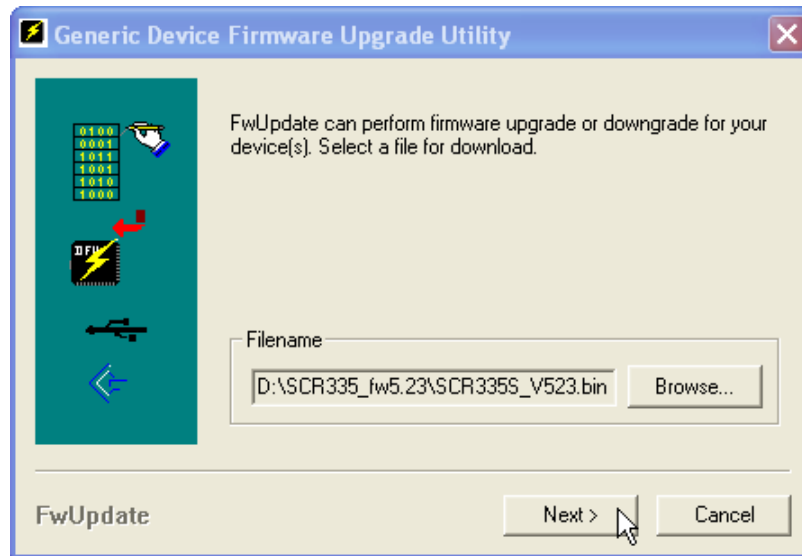
In the next window, click “Browse” in order to choose the file containing the firmware for your reader



Choose the file with the name ending in .bin from the same directory you started FwUpdate.exe from.



Click „Next“ to proceed



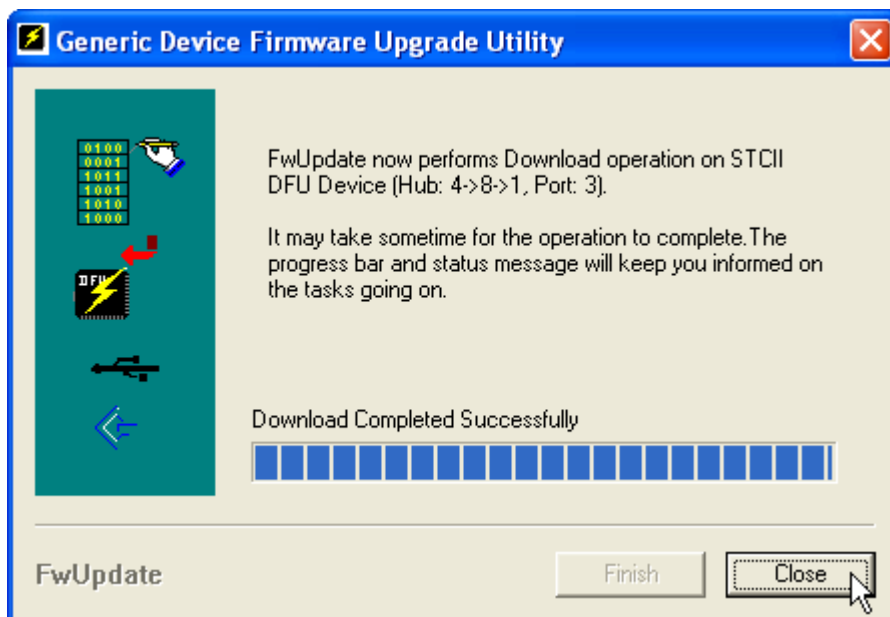
Under „New Value“, you’ll see a summary for the data of the new firmware. If the file chosen in the previous step is the correct one for your reader, click “Finish”, if not, click “Back” and again “Browse” to choose the correct file.



After clicking „Finish“, a progress bar displays the progress of the transfer. Two different messages „Downloading Firmware...“ and „Verifying Download“ tell you about the respective action being performed.



After finishing the update successfully this message is displayed:



Close the program by clicking „Close“. Your card reader should now again be recognized as such and work without problems.

If the described process doesn't get your reader back to normal, you'd most likely have to send the reader to us.

To do so, please contact our support team (support@scmmicro.com) that will send you an RMA number.

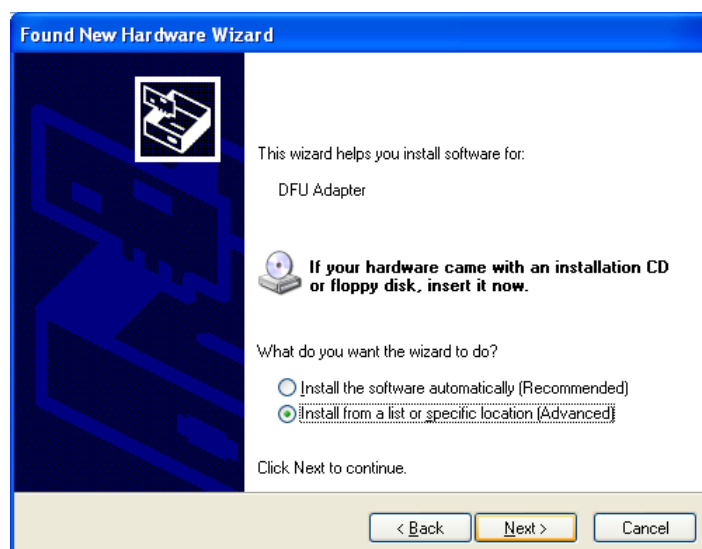
It might happen that the driver for the STCII DFU device is not loaded automatically. In this case, the Hardware Wizard of Windows will be opened to assist you in installing the correct driver.

The next pages describe this process.

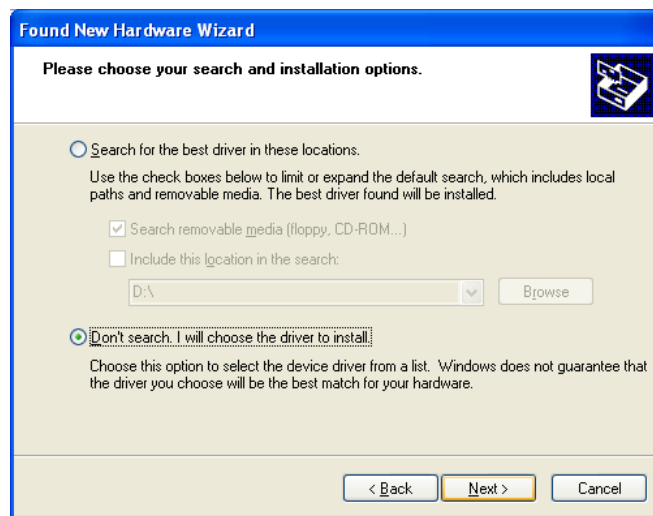
On the first page of the wizard choose "No, not this time" and click "Next"



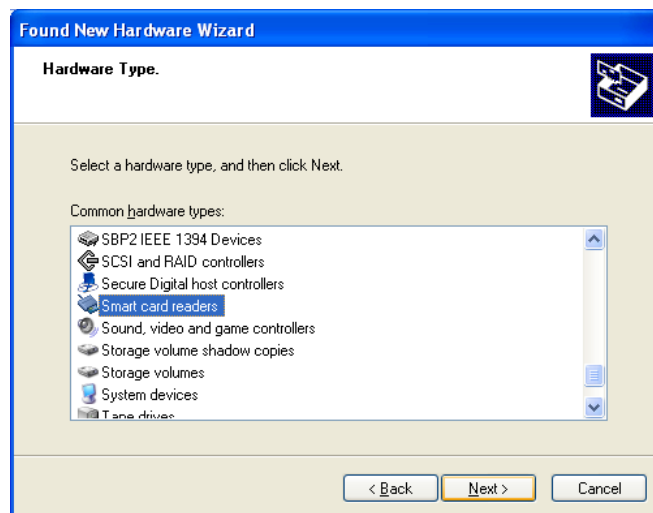
Then, choose „Install form a list...” and again click “Next”



Choose „Don't search, ...“ and click „Next“



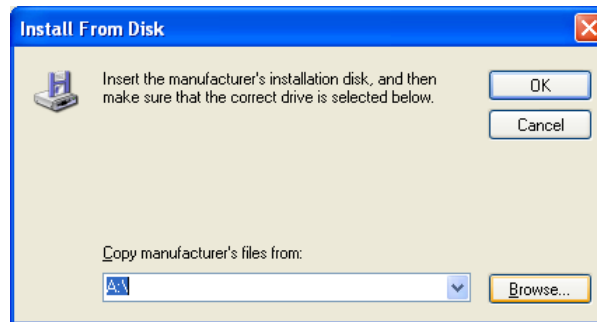
Choose Smart Card Readers as device type and click „Next“



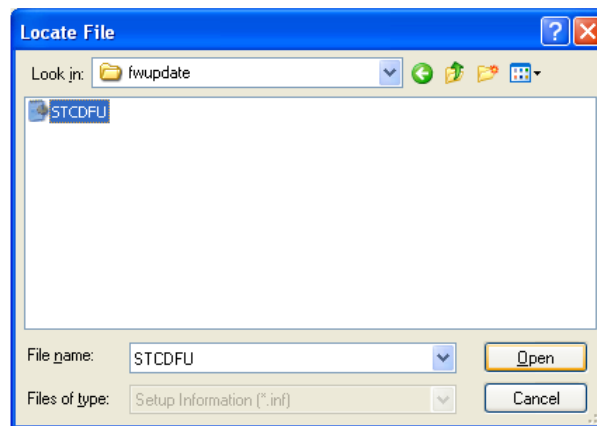
Click „Have Disk“ to choose the driver



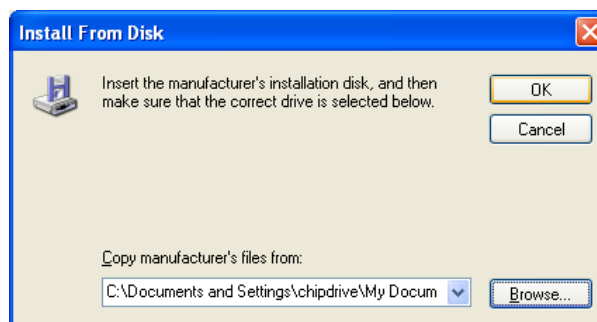
Click „Browse“



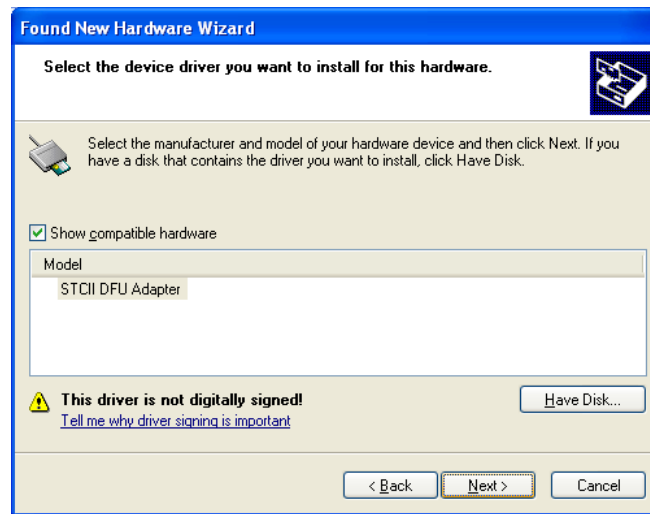
And go to the folder to which you unzipped the downloaded file. Choose "STCDFU" from the list and click "Open".



Then click „OK“



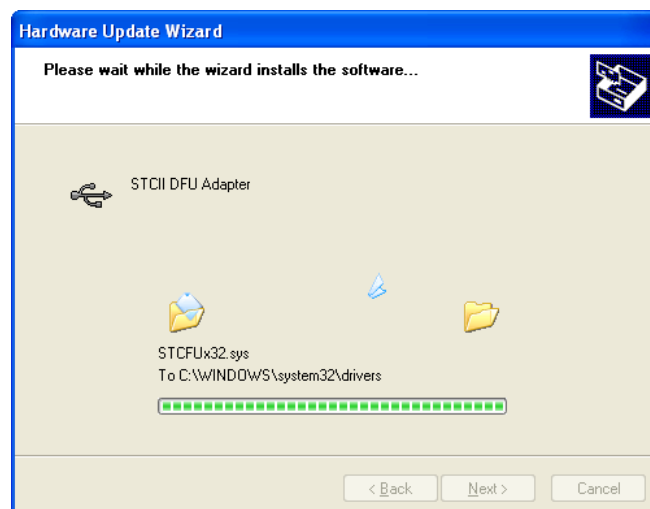
And finally click „Next“ again



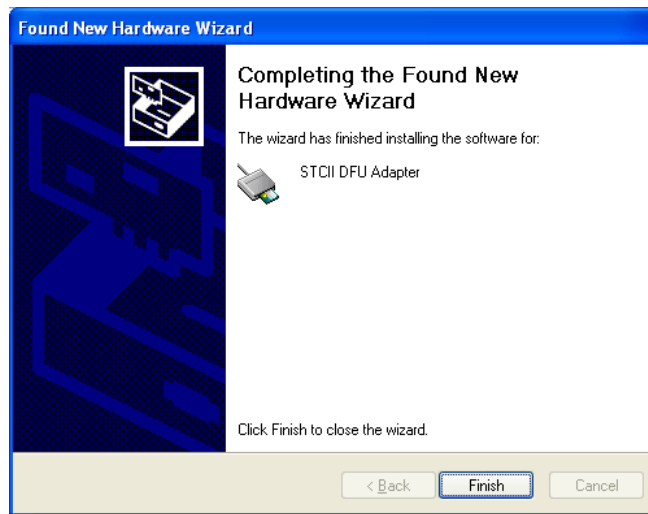
The driver wasn't tested for the Windows Logo test, so please click "Continue anyway" in the next dialog.



A progress bar is indicating the progress of the installation.



Finally, a screen telling you about successful installation is shown.



After closing this window by clicking „Finish”, transfer the firmware to the reader as described above.